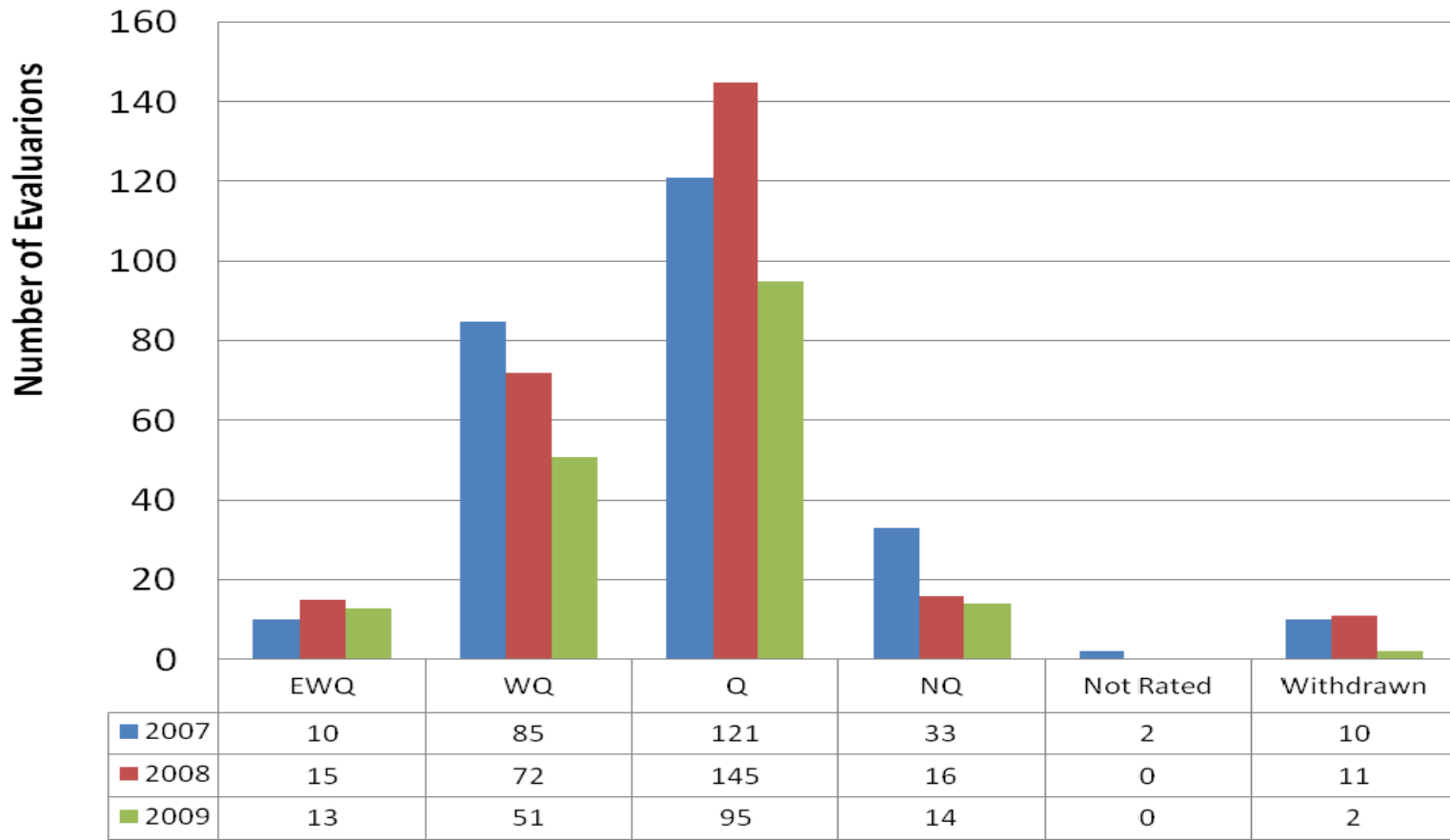


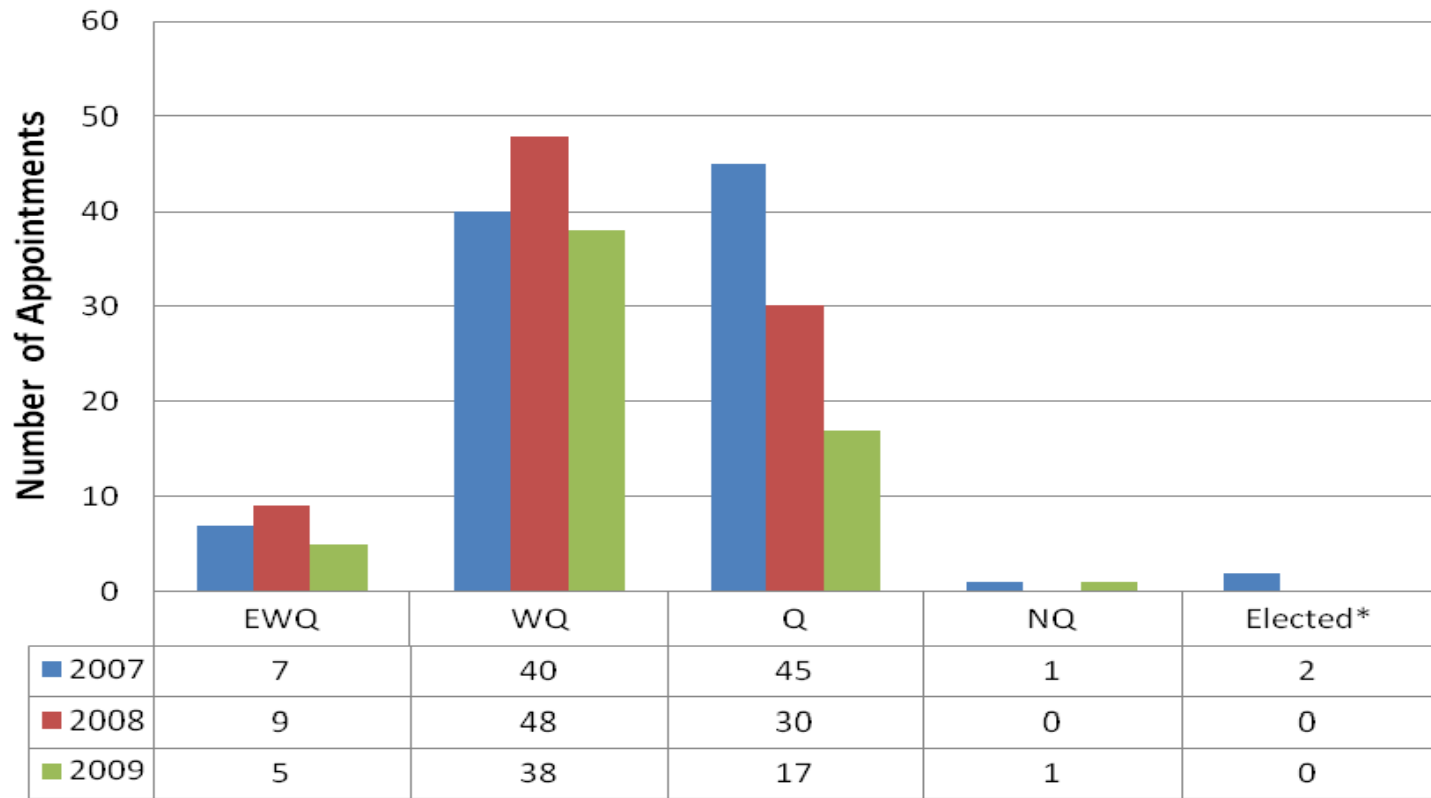
Total Judicial Evaluations - 2007-2009



Year	EWQ	%	WQ	%	Q	%	NQ	%	Not Rated	%	Withdrawn	%	Total
2007	10	4	85	33	121	46	33	13	2	1	10	4	261
2008	15	6	72	28	145	56	16	6	0	0	11	4	259
2009	13	7	51	29	95	54	14	8	0	0	2	1	175
Total	38	6%	208	30%	361	52%	63	9%	2	0%	23	3%	695

Table 1

Judicial Appointments by Rating (All Courts) 2007 - 2009



Year	EWQ	%	WQ	%	Q	%	NQ	%	Elected*	%	Total
2007	7	7	40	42	45	47	1	1	2	1	95
2008	9	10	48	55	30	34	0	0	0	0	87
2009	5	8	38	62	17	28	1	1	0	0	61
Total	21	9%	126	52%	92	38%	2	1%	2	1%	243

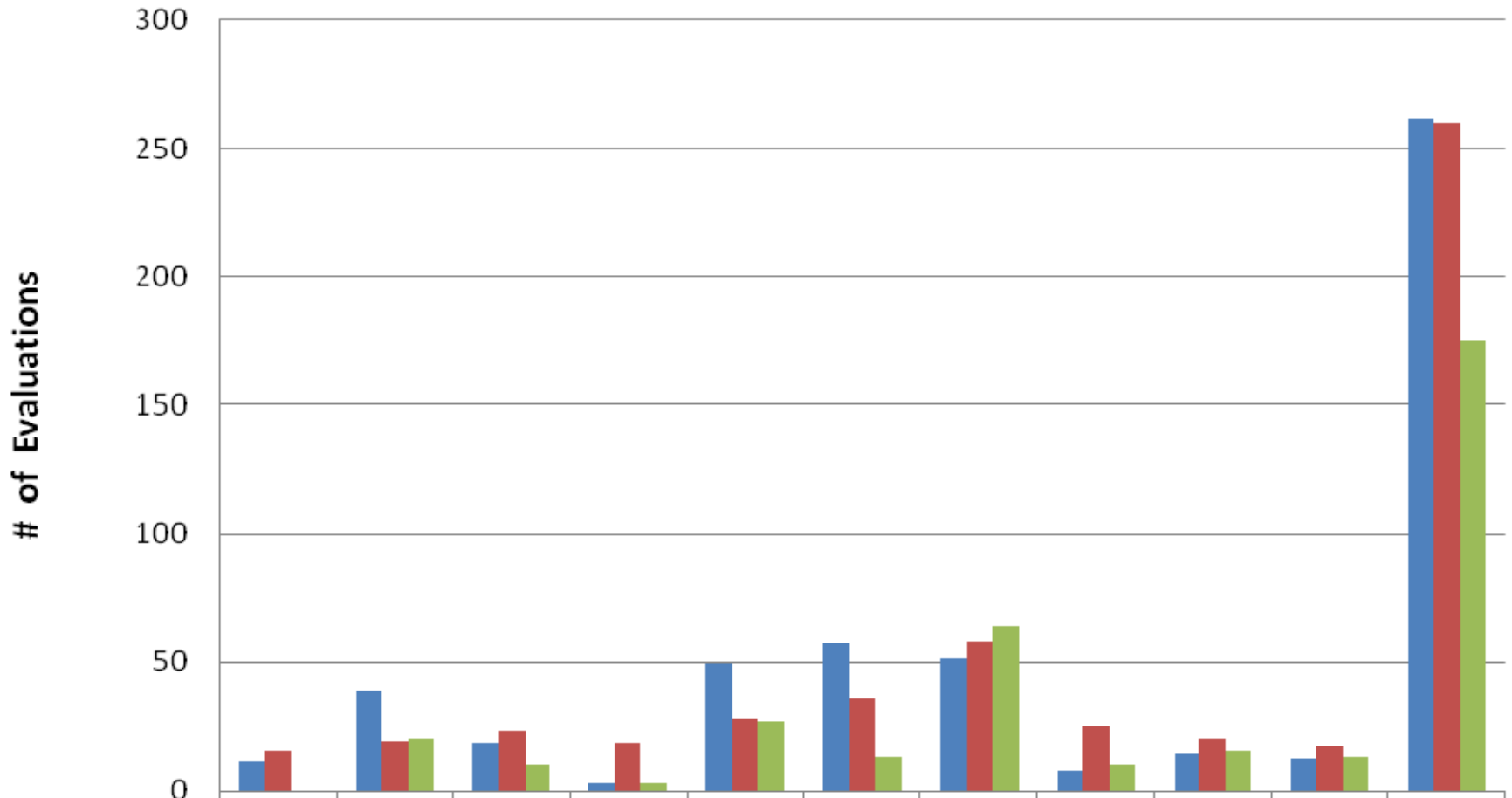
*Appointed after election pursuant to Chapter 2, Rule 7.27 of State Bar Rules Title 7, The Commission on Judicial Nominees Evaluation

Evaluations by County 2007 – 2009

<i>County</i>	<i>District</i>	<i>2007*</i>	<i>2008*</i>	<i>2009</i>	<i>Total</i>		<i>County</i>	<i>District</i>	<i>2007*</i>	<i>2008*</i>	<i>2009</i>	<i>Total</i>
Alameda	9	7	10	2	19		Placer	1	1	4	0	5
Alpine	2	0	0	0	0		Plumas	1	0	0	0	0
Amador	2	0	0	0	0		Riverside	6	20	14	4	38
Butte	1	4	1	0	5		Sacramento	2	23	10	10	43
Calaveras	2	0	0	0	0		San Benito	5	0	0	0	0
Colusa	1	0	1	0	1		San Bernardino	6	26	10	1	37
Contra Costa	3	2	7	1	10		San Diego	9	14	20	11	45
Del Norte	1	0	0	0	0		San Francisco	4	3	13	3	19
El Dorado	2	3	6	0	9		San Joaquin	5	4	3	2	9
Fresno	5	7	6	0	13		San Luis Obispo	6	0	3	0	3
Glenn	1	0	0	0	0		San Mateo	3	0	0	5	5
Humboldt	1	0	0	0	0		Santa Clara	3	9	6	4	19
Imperial	9	0	0	2	2		Santa Barbara	6	3	5	2	10
Inyo	5	0	0	0	0		Santa Cruz	5	3	2	0	5
Kern	5	11	11	4	26		Shasta	1	4	5	0	9
Kings	5	0	0	5	5		Sierra	1	0	0	0	0
Lake	1	0	0	0	0		Siskiyou	1	0	1	0	1
Lassen	1	0	0	0	0		Solano	2	4	1	2	7
Los Angeles	7	51	58	64	173		Sonoma	2	4	1	3	8
Madera	5	3	0	0	3		Stanislaus	5	6	2	3	11
Marin	4	0	5	0	5		Sutter	1	0	2	0	2
Mariposa	5	0	0	0	0		Tehama	1	0	0	0	0
Mendocino	1	0	0	0	0		Trinity	1	0	0	0	0
Merced	5	1	2	3	6		Tulare	5	9	0	4	13
Modoc	1	0	1	0	1		Tuolumne	2	0	0	0	0
Mono	5	0	0	0	0		Ventura	6	8	4	6	18
Monterey	5	5	2	6	13		Yolo	2	5	1	5	11
Napa	2	0	0	0	0		Yuba	1	0	0	0	0
Nevada	1	2	0	0	2		Supreme Ct.	0	0	0	0	0
Orange	8	7	25	10	42		Court of Appeals	0	12	17	13	42
							TOTALS		261	259	175	695

** In 2007, two candidates were appointed after election pursuant to Chapter 2, Rule 7.27, State Bar Rules Title 7, The Commission on Judicial Nominees Evaluation*

Evaluations by District 2007 - 2009



	District 1	District 2	District 3	District 4	District 5	District 6	District 7	District 8	District 9	App.	Total
■ 2007 Eval. #	11	39	18	3	49	57	51	7	14	12	261
■ 2008 Eval #	15	19	23	18	28	36	58	25	20	17	259
■ 2009 Eval #	0	20	10	3	27	13	64	10	15	13	175

Table 4

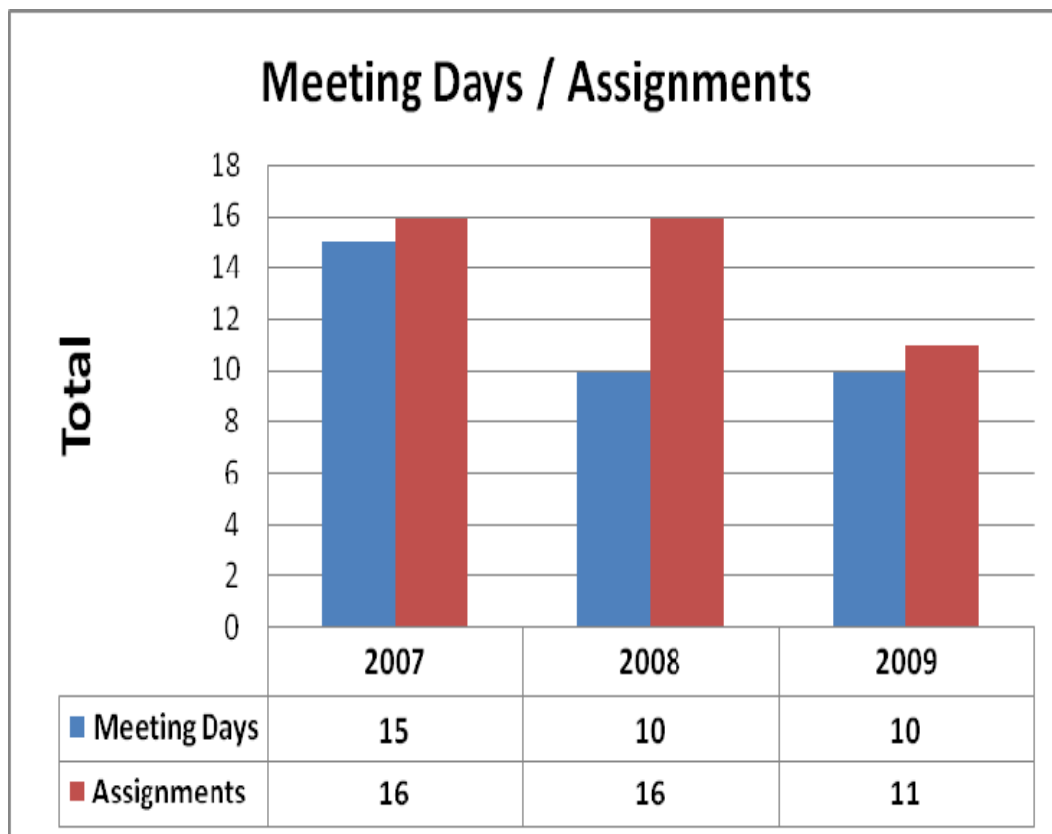
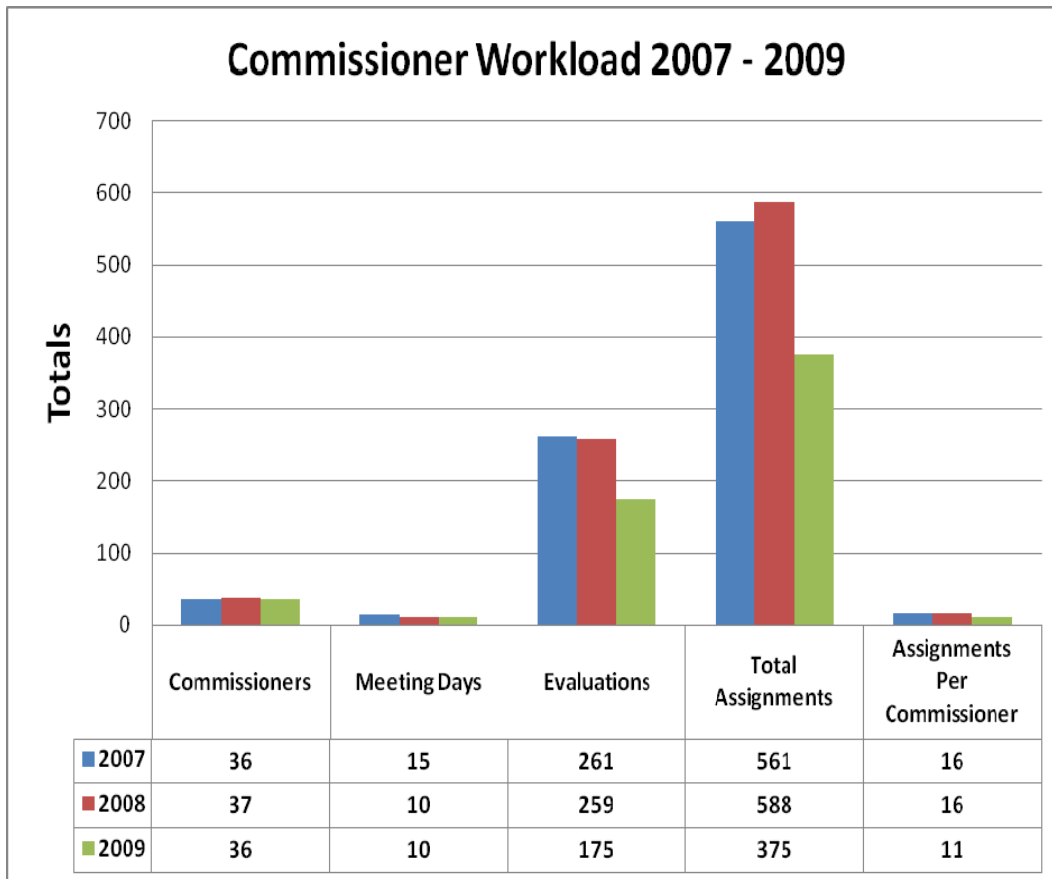


Table 5

Budget Statistics 2007 – 2009

Year	Budget	Commissioners	Meeting Days	Evaluations	Cost per Evaluation
2007	\$824,875	36	15	261	\$3,160
2008	\$890,299	37	10	259	\$3,437
2009	\$848,123	36	10	175	\$4,846

